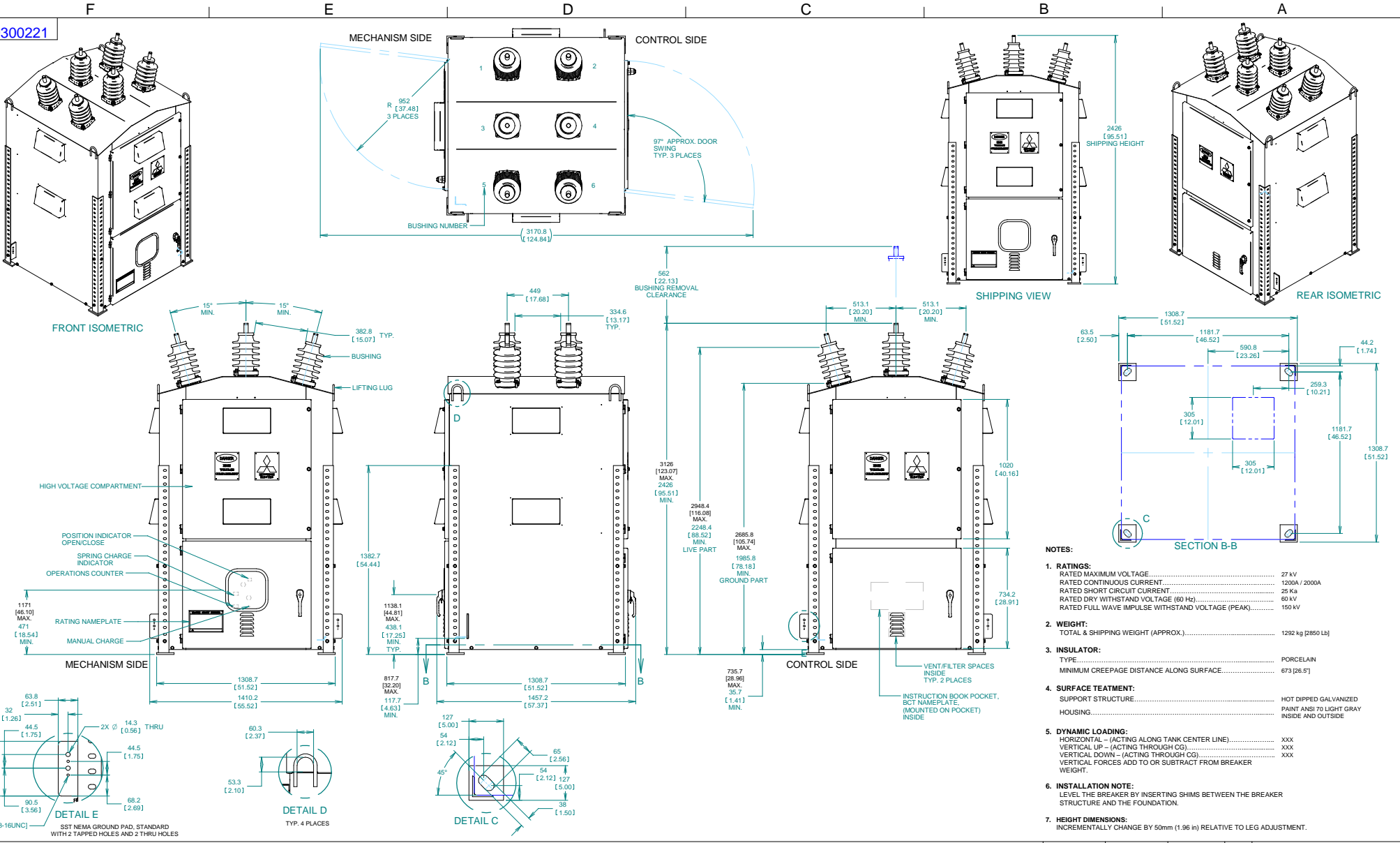


DWG. NO.

MD300221



- NOTES:**
- RATINGS:**
 - RATED MAXIMUM VOLTAGE..... 27 kV
 - RATED CONTINUOUS CURRENT..... 1200A / 2000A
 - RATED SHORT CIRCUIT CURRENT..... 25 Ka
 - RATED DRY WITHSTAND VOLTAGE (60 Hz)..... 60 kV
 - RATED FULL WAVE IMPULSE WITHSTAND VOLTAGE (PEAK)..... 150 kV
 - WEIGHT:**
 - TOTAL & SHIPPING WEIGHT (APPROX.)..... 1292 kg [2860 Lb]
 - INSULATOR:**
 - TYPE..... PORCELAIN
 - MINIMUM CREEPAGE DISTANCE ALONG SURFACE..... 673 [26.5']
 - SURFACE TREATMENT:**
 - SUPPORT STRUCTURE..... HOT DIPPED GALVANIZED
 - HOUSING..... PAINT ANSI 70 LIGHT GRAY INSIDE AND OUTSIDE
 - DYNAMIC LOADINGS:**
 - HORIZONTAL - (ACTING ALONG TANK CENTER LINE)..... XXX
 - VERTICAL UP - (ACTING THROUGH CG)..... XXX
 - VERTICAL DOWN - (ACTING THROUGH CG)..... XXX
 - VERTICAL FORCES ADD TO OR SUBTRACT FROM BREAKER WEIGHT.
 - INSTALLATION NOTE:**
 - LEVEL THE BREAKER BY INSERTING SHIMS BETWEEN THE BREAKER STRUCTURE AND THE FOUNDATION.
 - HEIGHT DIMENSIONS:**
 - INCREMENTALLY CHANGE BY 50mm (1.96 in) RELATIVE TO LEG ADJUSTMENT.

REV. NO.	DIM. IN		SCALE	DRAFTER	DATE
	MM	[IN]			
1			PROPRIETARY	4901	12/2008
			APPROVED	KJG	12/08
	REF. DWG. NO.		FILE LOCATION:		

MITSUBISHI ELECTRIC POWER PRODUCTS, INC. WARRENDALE, PA.	
TITLE	27DV25 BREAKER ASSEMBLY
DWG. NO.	MD300221
REV.	A
SHEET 1 OF 1	