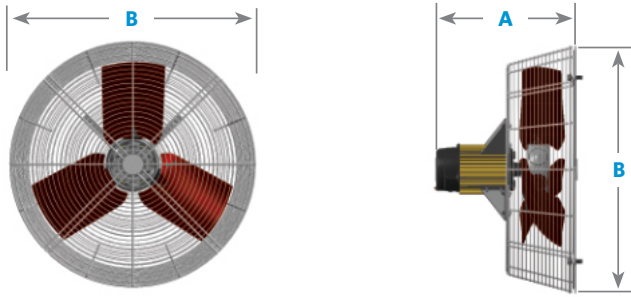


12" Transformer Cooling Fans

The engineered solution to transformer cooling.
More Air • Better Cooling • Longer Life



	A	B
12" Fan	13.125" (333.375mm)	14.875" (377.825mm)
Note: The 12" guards are 6-3/8" deep		
Estimated Shipping Weight: 21 lbs.		Shipping Dimensions: 15" x 27" x 27"

Low amp draw

- Low ampere draw means a motor that is operating under less load and less electrical stress. This will prolong the motor life and ensure many years of uninterrupted service

Superior air flow

- Certified air flow results tested to AMCA Standards 230 for fan thrust, AMCA 230-99 for calculated CFM
- Manufactured not assembled Blade and Motor Combination
- Forward or reverse airflow options
- High cubic feet per minute of air delivery minimizes the stress on transformer coils and provides more cooling air during peak load times

Engineered for outdoor application

- Unique, locking, labyrinth design between motor housing and impeller guard against moisture entry in the harshest of outdoor applications of high heat and humidity
- IP55 rated and UL 507-39 wash down ready
- UV Stabilized

Superior class F insulation system for longer motor life

- Ambient Temperature Range -13°F/-25°C and 131°F/55°C
- Aluminum housing for excellent heat dissipation
- Thermally Protected, single phase standard, three phase optional
- Rated severe duty, TEAO
- Sealed ball bearing in front and rear
- Poly Blades require less torque at start up and reduced in-rush current duration

Engineered for the world wide transformer industry

- 50 or 60Hz
- Powder Coated OSHA approved guards

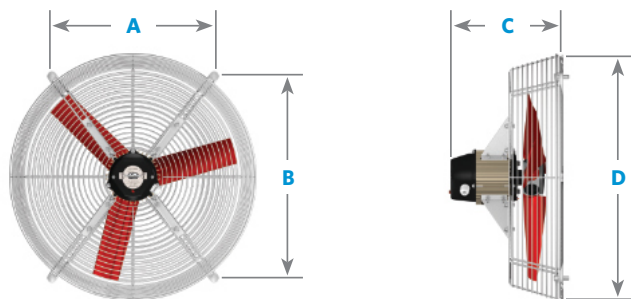
Backed by a 3 Year Warranty on motor impeller and parts and a 1 Year Warranty on manufacture of grill.

Part Number	Impeller Diameter [in]	HP	Phases	Freq. [Hz]	CFM	Voltage	Noise Level [dBA]@6ft	RPM	Running Current [A]	Starting Current [A]	PF	CFM per watt
PCA12-1/120/60	12	1/12	1	60	1490	120	57	1665	1	2.6	0.83	14
PCB12-1/230/60	12	1/12	1	60	1490	230	57	1675	0.6	1.4	0.85	14

REV 2/21/2023

18" Transformer Cooling Fans

The engineered solution to transformer cooling.
More Air • Better Cooling • Longer Life



	A	B	C	D
18" Fan	16" (406mm)	16" (406mm)	13.5" (343mm)	20.5" (521mm)
Note: All guards are 6-3/8" deep				

Estimated Shipping Weight: 35 lbs.

Shipping Dimensions: 22" x 21" x 14"

Low amp draw

- Low ampere draw means a motor that is operating under less load and less electrical stress. This will prolong the motor Life and ensure many years of uninterrupted service

Superior air flow

- Certified air flow results tested to AMCA Standards 230 for fan thrust, AMCA 230-99 for calculated CFM
- Manufactured not assembled Blade and Motor Combination
- Forward or reverse airflow options
- High cubic feet per minute of air delivery minimizes the stress on transformer coils and provides more cooling air during peak load times

Engineered for outdoor application

- Unique, locking, labyrinth design between motor housing and impeller guard against moisture entry in the harshest of outdoor applications of high heat and humidity
- IP55 rated and UL 507-39 wash down ready
- UV Stabilized

Superior class F insulation system for longer motor life

- Ambient Temperature Range -13°F/-25°C and 131°F/55°C
- Aluminum housing for excellent heat dissipation
- Thermally Protected, single phase standard, three phase optional
- Rated severe duty, TEAO
- Sealed ball bearing in front and rear
- Poly Blades require less torque at start up and reduced in-rush current duration

Engineered for the world wide transformer industry

- 50 or 60Hz

Backed by a 3 Year Warranty on motor impeller and parts and a 1 Year Warranty on manufacture of grill.

Part Number	Impeller Diameter [in]	HP	Phases	Freq. [Hz]	CFM	Voltage	Noise Level [dBA]@6ft	RPM	Running Current [A]	Starting Current [A]	PF	CFM per watt
PCA18-1/120/60	18	1/6	1	60	3060	120	63	1140	2.3	5.8	0.89	13
PCB18-1/120/60	18	1/3	1	60	4260	120	69	1650	2.7	6.7	0.98	14
PCA18-1/240/60	18	1/3	1	60	3050	208-240 †	64	1140	1.1	2.9	0.89	13
PCB18-1/240/60	18	1/2	1	60	4200	208-240 †	69	1650	1.5	3.5	0.99	12
PCC18-1/240/60	18	1/2	1	60	4504	208-240 †	72	1670	2.0	5.6	0.99	9
PCD18-1/230/50	18	1/3	1	50	2600	230	59	960	1.3	3.2	0.64	13
PCE18-1/230/50	18	1/2	1	50	3700	230	65	1410	1.1	3.7	0.91	16
PCF18-1/230/50	18	1/2	1	50	3959	230	67	1420	1.6	6.2	0.85	12
PCA18-3/460/60	18	1/6	3	60	3050	460	63	1140	0.6	1.6	0.45	14
PCB18-3/460/60	18	1/2	3	60	4360	460	70	1710	1.0	3.2	0.44	12
PCC18-3/460/60	18	1/2	3	60	4570	460	73	1710	1.1	4.5	0.55	10
PCD18-3/230/50	18	1/6	3	50	2610	230	59	960	1.0	1.7	0.38	16
PCE18-3/230/50	18	1/2	3	50	3740	230	65	1440	1.8	3.3	0.35	15
PCF18-3/230/50	18	1/2	3	50	3850	230	68	1440	1.8	4.7	0.43	12
PCA18-3/230/60	18	1/6	3	60	3040	230	62	1130	1.0	1.6	0.51	14
PCB18-3/230/60	18	1/2	3	60	4230	230	69	1690	1.6	3.2	0.52	12
PCC18-3/230/60	18	1/2	3	60	4460	230	72	1690	1.8	4.5	0.62	10
PCD18-3/400/50	18	1/6	3	50	2610	400	59	960	0.6	1.7	0.38	16
PCE18-3/400/50	18	1/2	3	50	3740	400	65	1440	1.1	3.3	0.35	15
PCF18-3/400/50	18	1/2	3	50	3850	400	68	1440	1.1	4.7	0.43	12

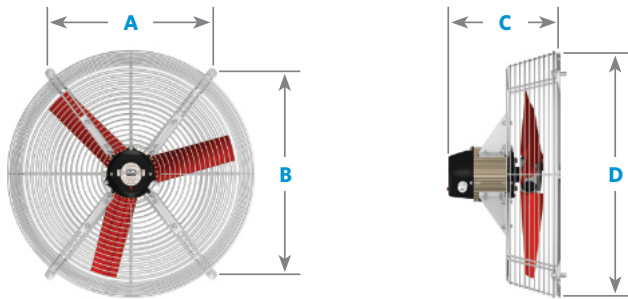
† NAMEPLATE IS LABELED 240V

**OPERATION VOLTAGE +/- 10% OF THE RATED VOLTAGE.

REV 2/21/2023

24" Transformer Cooling Fans

The engineered solution to transformer cooling.
More Air • Better Cooling • Longer Life



	A	B	C	D
24" Fan	18.5" (470mm)	23" (584mm)	15" (381mm)	28.5" (719mm)
Note: All guards are 6-3/8" deep				
Estimated Shipping Weight: 47 lbs.		Shipping Dimensions: 17" x 29" x 29"		

Low amp draw

- Low ampere draw means a motor that is operating under less load and less electrical stress. This will prolong the motor life and ensure many years of uninterrupted service

Superior air flow

- Certified air flow results tested to AMCA Standards 230 for fan thrust, AMCA 230-99 for calculated CFM
- Manufactured not assembled Blade and Motor Combination
- Forward or reverse airflow options
- High cubic feet per minute of air delivery minimizes the stress on transformer coils and provides more cooling air during peak load times

Engineered for outdoor application

- Unique, locking, labyrinth design between motor housing and impeller guard against moisture entry in the harshest of outdoor applications of high heat and humidity
- IP55 rated and UL 507-39 wash down ready
- UV Stabilized

Superior class F insulation system for longer motor life

- Ambient Temperature Range -13°F/-25°C and 131°F/55°C
- Aluminum housing for excellent heat dissipation
- Thermally Protected, single phase standard, three phase optional
- Rated severe duty, TEAO
- Sealed ball bearing in front and rear
- Poly Blades require less torque at start up and reduced in-rush current duration

Engineered for the world wide transformer industry

- 50 or 60Hz
- Hot dipped Galvanized OSHA guards

Backed by a 3 Year Warranty on motor impeller and parts and a 1 Year Warranty on manufacture of grill.

Part Number	Impeller Diameter [in]	HP	Phases	Freq. [Hz]	CFM	Voltage	Noise Level [dBA]@6ft	RPM	Running Current [A]	Starting Current [A]	PF	CFM per watt
PCA24-1/120/60	24	1/6	1	60	6100	120	66	1110	2.7	5.8	0.91	21
PCA24-1/240/60	24	1/3	1	60	6050	208-240 †	66	1110	1.4	2.9	0.91	21
PCB24-1/240/60	24	1/2	1	60	7300	208-240 †	75	1690	1.8	5.6	0.99	17
PCD24-1/230/50	24	1/2	1	50	5200	230	61	940	1.4	3.2	0.71	23
PCE24-1/230/50	24	1/2	1	50	6200	230	71	1420	1.5	6.2	0.83	21
PCA24-3/460/60	24	1/6	3	60	6030	460	66	1120	0.7	1.6	0.53	22
PCB24-3/460/60	24	1/2	3	60	7500	460	75	1720	1.1	4.5	0.50	19
PCC24-3/460/60	24	1/2	3	60	7600	460	73	1110	1.3	3.4	0.60	13
PCD24-3/400/50	24	1/6	3	50	5190	400	62	950	0.6	1.7	0.44	27
PCE24-3/400/50	24	1/2	3	50	6320	400	70	1450	1.1	4.7	0.38	23
PCF24-3/400/50	24	1/2	3	50	6550	400	68	940	1.2	3.7	0.49	17
PCA24-3/230/60	24	1/6	3	60	5890	230	66	1100	1.1	1.6	0.59	22
PCB24-3/230/60	24	1/2	3	60	7410	230	74	1710	1.7	4.5	0.56	19
PCC24-3/230/60	24	1/2	3	60	7490	230	72	1080	2.1	3.4	0.64	13
PCD24-3/230/50	24	1/6	3	50	5190	230	62	950	1.1	1.7	0.44	27
PCE24-3/230/50	24	1/2	3	50	6320	230	70	1450	1.8	4.7	0.38	23
PCF24-3/230/50	24	1/2	3	50	6550	230	68	940	2.0	3.7	0.49	17

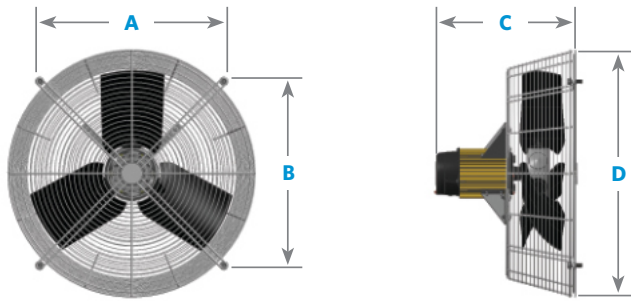
† NAMEPLATE IS LABELED 240V

**OPERATION VOLTAGE +/- 10% OF THE RATED VOLTAGE.

REV 2/21/2023

26" Transformer Cooling Fans Low Noise

The engineered solution to transformer cooling.
More Air • Better Cooling • Longer Life



	A	B	C	D
26" Fan	23" (584mm)	23" (584mm)	17.15" (435.7mm)	31" (787mm)
Note: 16", 18", 24", 27" guards are 6-3/8" deep, 26" Low Noise guard is 8-1/2" deep				
Estimated Shipping Weight: 61 lbs.		Shipping Dimensions: 17" x 29" x 29"		

Low amp draw

- Low ampere draw means a motor that is operating under less load and less electrical stress. This will prolong the motor life and ensure many years of uninterrupted service

Superior air flow

- Certified air flow results tested to AMCA Standards 230 for fan thrust, AMCA 230-99 for calculated CFM
- Manufactured not assembled Blade and Motor Combination
- Forward or reverse airflow options
- High cubic feet per minute of air delivery minimizes the stress on transformer coils and provides more cooling air during peak load times

Engineered for outdoor application

- Unique, locking, labyrinth design between motor housing and impeller guard against moisture entry in the harshest of outdoor applications of high heat and humidity
- IP55 rated and UL 507-39 wash down ready
- UV Stabilized

Superior class F insulation system for longer motor life

- Ambient Temperature Range -13°F/-25°C and 131°F/55°C
- Aluminum housing for excellent heat dissipation
- Thermally Protected, single phase standard, three phase optional
- Rated severe duty, TEAO
- Sealed ball bearing in front and rear
- Poly Blades require less torque at start up and reduced in-rush current duration

Engineered for the world wide transformer industry

- 50 or 60Hz
- Hot dipped Galvanized OSHA guards

Backed by a 3 Year Warranty on motor impeller and parts and a 1 Year Warranty on manufacture of grill.

Part Number	Impeller Diameter [in]	HP	Phases	Freq. [Hz]	CFM	Voltage	Noise Level [dBA]@6ft	RPM	Running Current [A]	Starting Current [A]	PF	CFM per watt
PCK26-1/240/60BLK	26	1/6	1	60	5300	208-240 †	51	555	1.1	1.5	0.90	24
PCI26-1/240/60BLK	26	1/2	1	60	7200	208-240 †	63	865	1.9	3.2	1.00	16
PCL26-1/230/50BLK	26	1/8	1	50	4600	230	46	470	1.0	1.6	0.73	27
PCJ26-1/230/50BLK	26	1/3	1	50	6050	230	58	725	1.4	3.7	0.89	21
PCG26-3/460/60BLK	26	1/5	3	60	5180	460	53	560	0.7	1.2	0.44	24
PCI26-3/460/60BLK	26	1/2	3	60	7560	460	63	860	1.0	2.9	0.60	17
PCH26-3/400/50BLK	26	1/6	3	50	4360	400	48	480	0.7	1.2	0.38	26
PCJ26-3/400/50BLK	26	1/3	3	50	6300	400	58	720	0.9	2.7	0.49	22
PCG26-3/230/60BLK	26	1/5	3	60	5030	230	51	550	1.0	1.8	0.50	25
PCI26-3/230/60BLK	26	1/2	3	60	7330	230	63	840	1.7	4.2	0.67	17
PCH26-3/230/50BLK	26	1/6	3	50	4360	230	48	480	1.1	2.1	0.38	26
PCJ26-3/230/50BLK	26	1/3	3	50	6300	230	58	720	1.5	4.8	0.49	22

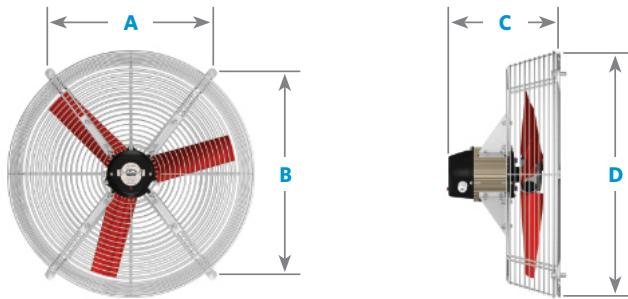
† NAMEPLATE IS LABELED 240V

**OPERATION VOLTAGE +/- 10% OF THE RATED VOLTAGE.

REV 2/21/2023

27" Transformer Cooling Fans

The engineered solution to transformer cooling.
More Air • Better Cooling • Longer Life



	A	B	C	D
27" Fan	23" (584mm)	23" (584mm)	15" (381mm)	31" (787mm)
Note: All guards are 6-3/8" deep				
Estimated Shipping Weight: 50 lbs.		Shipping Dimensions: 17" x 32" x 32"		

Low amp draw

- Low ampere draw means a motor that is operating under less load and less electrical stress. This will prolong the motor life and ensure many years of uninterrupted service

Superior air flow

- Certified air flow results tested to AMCA Standards 230 for fan thrust, AMCA 230-99 for calculated CFM
- Manufactured not assembled Blade and Motor Combination
- Forward or reverse airflow options
- High cubic feet per minute of air delivery minimizes the stress on transformer coils and provides more cooling air during peak load times

Engineered for outdoor application

- Unique, locking, labyrinth design between motor housing and impeller guard against moisture entry in the harshest of outdoor applications of high heat and humidity
- IP55 rated and UL 507-39 wash down ready
- UV Stabilized

Superior class F insulation system for longer motor life

- Ambient Temperature Range -13°F/-25°C and 131°F/55°C
- Aluminum housing for excellent heat dissipation
- Thermally Protected, single phase standard, three phase optional
- Rated severe duty, TEAO
- Sealed ball bearing in front and rear
- Poly Blades require less torque at start up and reduced in-rush current duration

Engineered for the world wide transformer industry

- 50 or 60Hz
- Hot dipped Galvanized OSHA guards

Backed by a 3 Year Warranty on motor impeller and parts and a 1 Year Warranty on manufacture of grill.

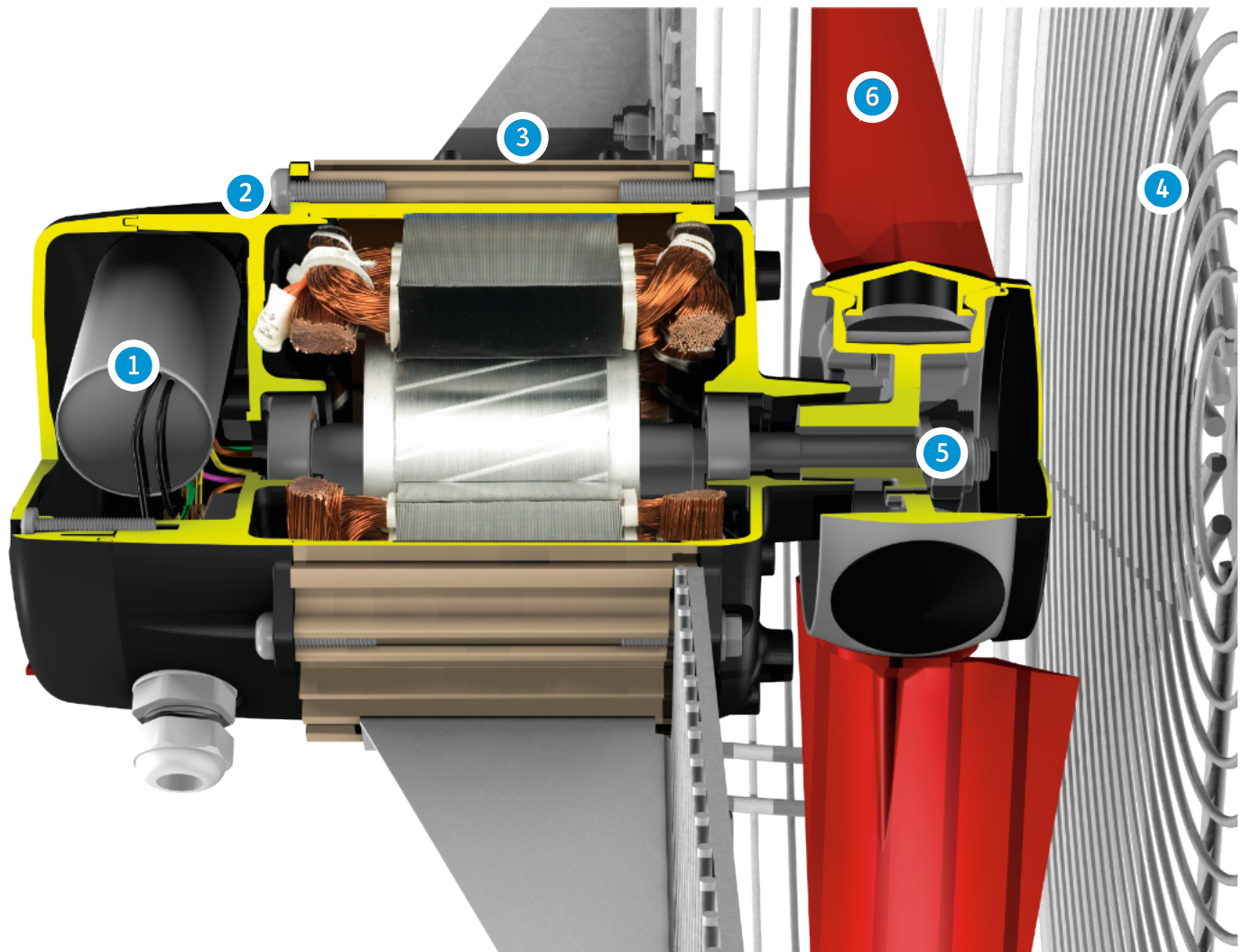
Part Number	Impeller Diameter [in]	HP	Phases	Freq. [Hz]	CFM	Voltage	Noise Level [dBA]@6ft	RPM	Running Current [A]	Starting Current [A]	PF	CFM per watt
PCA27-1/120/60	27	1/6	1	60	7400	120	69	1120	2.8	5.8	0.91	25
PCA27-1/240/60	27	1/3	1	60	7350	208-240†	69	1110	1.3	2.9	0.91	26
PCC27-1/240/60 ‡	27	1/2	1	60	9450	208-240†	76	1620	2.5	5.6	0.99	17
PCD27-1/230/50	27	1/3	1	50	6300	230	64	950	1.4	3.2	0.70	29
PCF27-1/230/50 ‡	27	1/2	1	50	8000	230	72	1400	1.9	6.2	0.89	21
PCA27-3/460/60	27	1/6	3	60	7300	460	67	1120	0.7	1.6	0.53	27
PCB27-3/460/60	27	1/2	3	60	8320	460	71	1120	1.2	3.4	0.54	16
PCC27-3/460/60 ‡	27	1/2	3	60	9610	460	76	1690	1.2	4.5	0.63	17
PCD27-3/400/50	27	1/6	3	50	6250	400	64	950	0.6	1.7	0.44	34
PCE27-3/400/50	27	1/6	3	50	7000	400	66	950	1.2	3.7	0.43	20
PCF27-3/400/50 ‡	27	1/2	3	50	8100	400	72	1420	1.1	4.7	0.49	22
PCA27-3/230/60	27	1/6	3	60	7220	230	67	1100	1.1	1.6	0.58	28
PCB27-3/230/60	27	1/2	3	60	8240	230	70	1100	1.9	3.4	0.60	18
PCC27-3/230/60 ‡	27	1/2	3	60	9380	230	75	1660	2.0	4.5	0.69	17
PCD27-3/230/50	27	1/6	3	50	6250	230	64	950	1.1	1.7	0.44	34
PCE27-3/230/50	27	1/6	3	50	7000	230	66	950	2.0	3.7	0.43	20
PCF27-3/230/50 ‡	27	1/2	3	50	8100	230	72	1420	1.9	4.7	0.49	22

‡ 2 BLADES

† NAMEPLATE IS LABELED 240V

**OPERATION VOLTAGE +/- 10% OF THE RATED VOLTAGE.

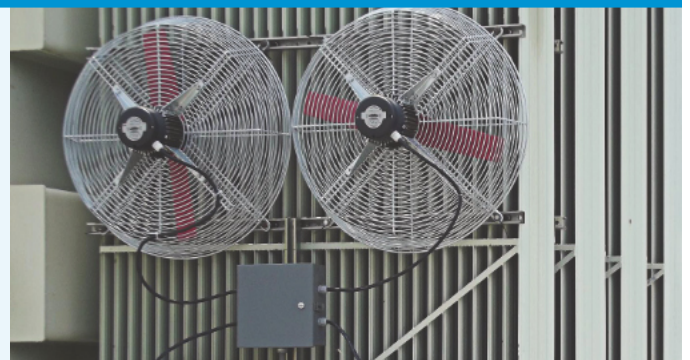
REV 2/21/2023

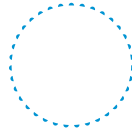


- 1 Heavy Duty Class European Manufactured Capacitor
- 2 Stainless Steel Bolts
- 3 Finned Construction Housing for Superior Heat Dissipation
- 4 OSHA approved Hot Dipped Galvanized Guards
- 5 Motorshaft completely protected from weather and elements
- 6 Light-weight, UV Stabilized polymer blades

Engineered for outdoor use

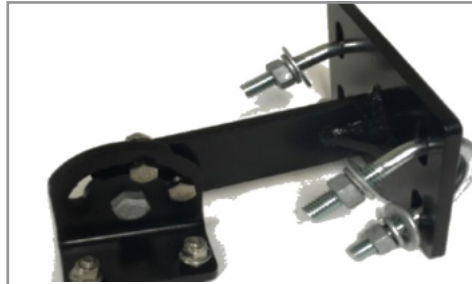
- Unique, locking, labyrinth design between motor housing and impeller guard against moisture entry in the harshest of outdoor applications of high heat and humidity
- IP55 rated and UL 507-39 wash down ready
- UV Stabilized





Catalog Number: SRPSMKIT

Description: Flush mounting brackets 19" thread rod with hardware.
—Used to mount the fan on the side of the radiator



Catalog Number: SRPSYOE

Description: Flush mounting brackets 19" thread rod with hardware.—Used to mount the fan on the side of the radiator in a yoke position or on a fan tree



Catalog Number: JBOLT

Description: JBolt mounting brackets - hot dip galvanized with hardware. — Used to mount the fan on the bottom of the radiator



Catalog Number: SRPSADPKIT

Description: 26" adapter brackets with hardware.—used to help retrofit a 24" or 27" exiting bracket footprint to a 26" fan footprint.



Catalog Number: SRPSHEADERMKIT18, 24 & 27

Description: Header Mount Bracket kit gray powder coat paint with hardware for 18", 24", 26" and 27" fan.



Catalog Number: SRPSBPLMT

Description: Base plate mounting kit 3/16 aluminum with hardware used on a NEMA 48 & 56 motor.

Mounting Brackets

Part Number	Description	Mounting Style
SRPSMKIT	Flush mounting brackets 19" thread rod with hardware.	Side of radiator.
SRPSYOE	Yoke mounting brackets black powder coat paint with hardware.	Side of radiator in a yoke position or on a fan tree.
JBOLT	JBolt mounting brackets - hot dip galvanized with hardware.	Bottom of radiator.
SRPSADPKIT	26" adapter brackets with hardware. Retrofit a 24" or 27" existing bracket footprint.	Side mount extender bracket.
SRPSHEADERMKIT 18, 24 & 27	Header mount bracket kit gray powder coat paint with hardware for 18", 24", 26" & 27" fan.	Bottom of radiator.
SRPSBPLMT	Base plate mounting kit 3/16 aluminum with hardware used on a NEMA 48 & 56 motor.	Side of radiator on arm or fan tree.

REV 8/12/2022



Quick Connect



Permanent Cord

Quick Connect Cords

Part Number	Description	Phase	Length
PCFQC36WTCB	Quick Connect cord Female with male plug	1	6'
PCFQC312WTCB	Quick Connect cord Female with male plug	1	12'
PCFQC46WTCB	Quick Connect cord Female with male plug	3	6'
PCFQC412WTCB	Quick Connect cord Female with male plug	3	12'
PCMQC36WTCB	Quick Connect cord Male with female plug	1	6'
PCMQC312WTCB	Quick Connect cord Male with female plug	1	12'
PCMQC46WTCB	Quick Connect cord Male with female plug	3	6'
PCMQC412WTCB	Quick Connect cord Male with female plug	3	12'

Permanent Cords

Part Number	Description	Phase	Length
PCCS36WTC	Transformer Cord Set (no plug / receptacle)	1	6'
PCCS38WTC	Transformer Cord Set (no plug / receptacle)	1	8'
PCCS312WTC	Transformer Cord Set (no plug / receptacle)	1	12'
PCCS46WTC	Transformer Cord Set (no plug / receptacle)	3	6'
PCCS48WTC	Transformer Cord Set (no plug / receptacle)	3	8'
PCCS412WTC	Transformer Cord Set (no plug / receptacle)	3	12'

*QUICK CONNECT SETS CONTAIN CORD W/ PLUG, WATERTIGHT CONNECTOR, LOCK NUT AND RECEIVING

REV 8/12/2022